

# COMPLIANCE OF BELTING EDGE CONVEYOR AND PROCESS BELTS FOR FOOD PRODUCTION

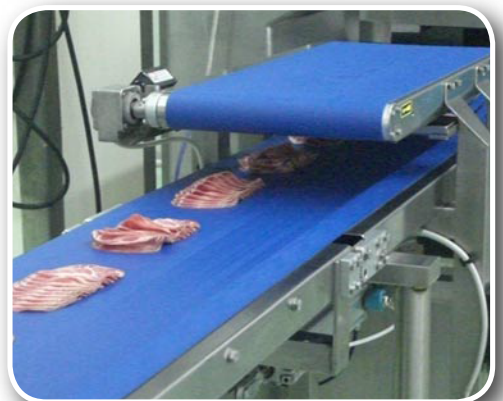
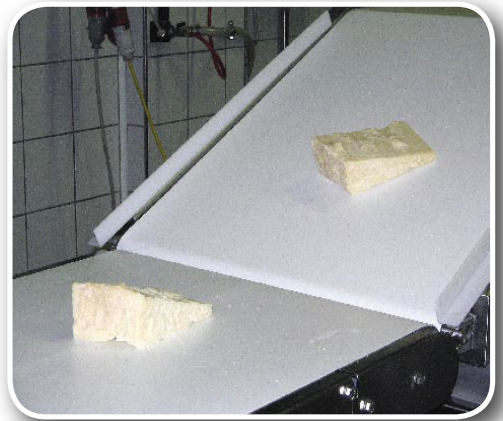
**BELTING EDGE conveyor belts for the food industry conform to the following regulations:**

**EUROPEAN REGULATION 1935/2004/EC**

**EUROPEAN REGULATION 2023/2006/EC**

**EUROPEAN DIRECTIVE 2002/72/EC**  
and its amendments

**FDA (Food and Drug Administration)**



According to the European Regulations, companies operating in the food industry **MUST** require a declarations of compliance for any belt used in direct contact with foodstuff.

**BELTING EDGE releases these declarations as required by the European Regulations.**



For information on the safety of BELTING EDGE belts for the food industry, please contact our consultants at: [huston@beltingedge.co.za](mailto:huston@beltingedge.co.za)  
Your BELTING EDGE representative will respond to your request.